

**Setting the pace in  
welding and cutting today**



**TIGER**

**TIG/MMA Welding in DC or AC/DC**

# TIGER 170/210 DC or AC/DC

The new primary switched inverter TIGER family the power-house for the workshop and site work alike.

The ergonomically designed plastic housing weighing just under 7 kg, combined with the TIGER elegance and power all packaged in the smallest space. Guarantees extreme flexibility with high performance.

The brand new REHM TIG primary inverter TIGER incorporates:

## **... specially designed TIG high power module**

- ◆ Your benefit  
210A of raw power (duty cycle of 50%), with a 230 V single phase (50/60 Hz) fused at 16 A.

## **... the Intelligent Ignition Control**

- ◆ Your benefit  
INTIG Energy (Intelligent Ignition Energy) can be adjusted to ensure only energy required for perfect ignition is provided. This setting is independent of the welding current and can be set up as a special parameter for the most difficult of applications.

## **... selectable HF ignition**

- ◆ Your benefit  
you can tackle the smallest of jobs, even when you are faced with sensitive working environments, e.g. repairs in the vicinity of computers or electronics.

## **... pulse function as standard**

- ◆ Your benefit  
reduced heat input and increased weld quality especially when working with thin materials.

**... up slope, down slope, gas pre- and post flow settings can all be independently set and saved**

- ◆ Your benefit  
Fine tuning of the settings results in the perfect weld, which can be repeated time after time.

## **MMA-Welding**

### **... BOOSTER function**

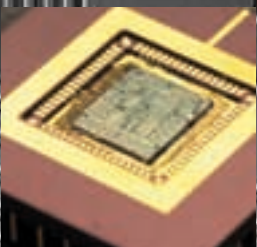
- ◆ Your benefit  
when MMA-welding in the BOOSTER mode 150 or 170 A (depending upon model) is on hand.

### **... fuse hold function**

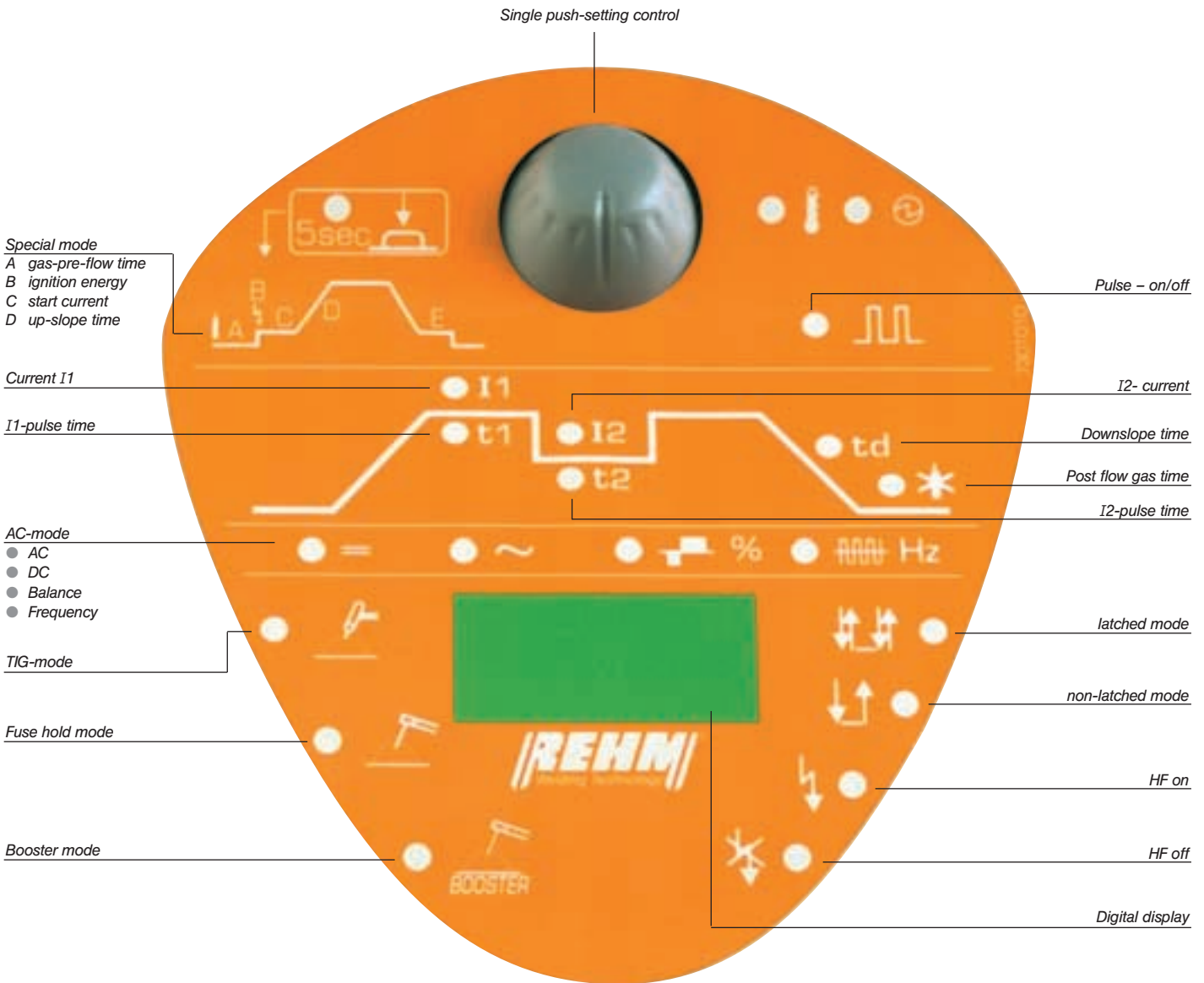
- ◆ Your benefit  
unwanted interruptions due to the mains fuse tripping (standard re-settable type) are a thing of the past. The electronic control carefully monitors and regulates the welding output. In this mode the output is 140 or 160 A (depending on model).

### **... REHM-ELSA System (Electronic Stabilised Arc)**

- ◆ Your benefit  
gone are the days of the arc dying out during welding... The REHM-ELSA system guarantees continuous MMA welding, even when using a mains supply cable of up to 100 m long.



# Innovation and power



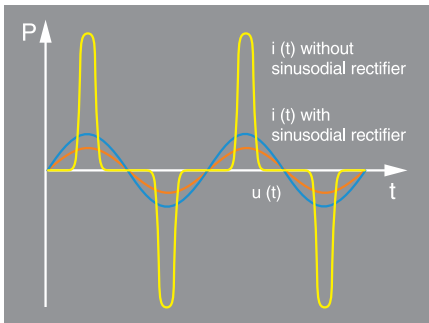
## ... maximum fun to use

◆ Your benefit  
 almost everyone can use the TIGER.  
 The easy to use panel is ergonomically laid out, this power pack really is "half the size for twice the power" of comparable units.

The TIGER delivers its maximum power, with the highest reliability. Every power module is completely potted, and all of the sensitive electronic components fully protected from harmful damp and dust. The compact size and minimum weight confirms the TIGER as the real power package.

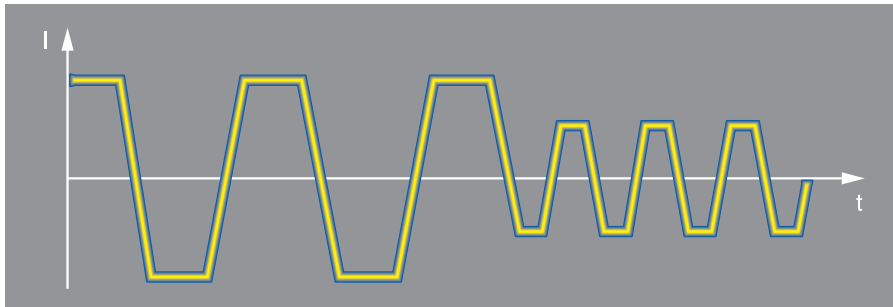


# The new **TIGER** in welding technology



## REHM sinusoidal rectifier

The sinusoidal rectifier, also referred to as PFC (power factor corrector), provides an adapted, sinusoidal current output allowing a maximum welding current of 210 A at 230 V mains voltage.



## REHM automatic frequency control system

This system has also been patented by REHM (patent no. 4006203). In AC welding, the frequency is automatically adapted to the current, minimising the load on the tungsten electrode. Long service life and optimum economics are the results.

## ... the complete set

- ◆ Your benefit  
the TIGER can also be supplied as a set, this is complete in a metal carrying case. All of the essential items needed for welding are always on hand.

## ... integrated remote control connector

- ◆ Your benefit  
when fitted with the REHM TIG R-SR26 torch the integrated current adjustment potentiometer, the welding of difficult to reach positional joints simplifies. The leather outer hose with flexible supply cables ensures total accessibility at all times.



# Technical data TIGER

Inverter type		TIGER 170 DC	TIGER 170 AC/DC	TIGER 210 DC	TIGER 210 AC/DC
Maximal current output	TIG mode [A]	170	170	210	210
	BOOSTER mode [A]	150	150	170	170
	Fuse Hold mode [A]	140	140	160	160
Duty cycle at 20 °C (40 °C) at Max I	TIG mode [%]	50 (30)	50 (30)	50 (30)	50 (30)
	BOOSTER mode [%]	55 (30)	55 (30)	90 (30)	90 (30)
	Fuse Hold mode [%]	60 (35)	60 (35)	100 (35)	100 (35)
Welding output at 100% Duty cycle, 20 °C (40 °C)	TIG mode [A]	135 (100)	135 (100)	175 (140)	175 (140)
	BOOSTER mode [A]	120 (100)	120 (100)	160 (120)	160 (120)
Main supply voltage 50/60 Hz	[V]	1 x 230	1 x 230	1 x 230	1 x 230
Dimensionsn (bwxhxh)	[mm]	290 x 150 x 215	340 x 150 x 295	340 x 150 x 215	340 x 150 x 295
Weight	[kg]	5,4	7,8	6,5	8,4
Ingress protection classification		IP 23	IP 23	IP 23	IP 23
Article Number		150 3310	150 3320	150 3350	150 3360

The technical details are subject to alteration without prior notice.



Welding of stainless steel with TIG



Welding of Aluminium with AC TIG



Welding of thin Aluminium with AC TIG

## ... maximum flexibility

- ◆ Your benefit totally suitable for mobile and fluid applications. For TIG or MMA welding of mild and stainless steel, whilst also taking care of Aluminium based alloys. The elegant power set always feels at home.



# REHM welding technology – all about us



REHM welding technology in Uhingen

The performance programme from REHM

- ◆ REHM MIG/MAG welding units
- ◆ REHM TIG welding units
- ◆ REHM inverter units
- ◆ REHM plasma cutting machines
- ◆ Welding accessories and accessories
- ◆ Welding fume extractors
- ◆ Technical welding consultancy
- ◆ Service, spare parts and repairs

We continually monitor the market to ensure that we are fully aware of demanding needs of our customers. These requirements form the basis of our advanced customer-orientated product research and development.

The centralised organisation ensures that new developments can immediately be put into production.

Our commitment to the future is underlined by the large number of patents we hold. With REHM products, you can be sure of the highest level of quality, which is 100% fully tested.

Working hand in hand with our customers, providing highly competent advice, for training, sales and customer service are all part of our basic principles of business.

Development, design and production – everything under one roof, in our works in Uhingen.



**Setting the pace in  
welding and cutting today**

**REHM GmbH u. Co Schweißtechnik**

Ottostraße 2 · D-73066 Uhingen

Phone +49(0)7161 30 07-0

Fax +49(0)7161 30 07-20

e-mail: [rehm@rehm-online.de](mailto:rehm@rehm-online.de)

Internet: <http://www.rehm-online.de>

Your distributor: